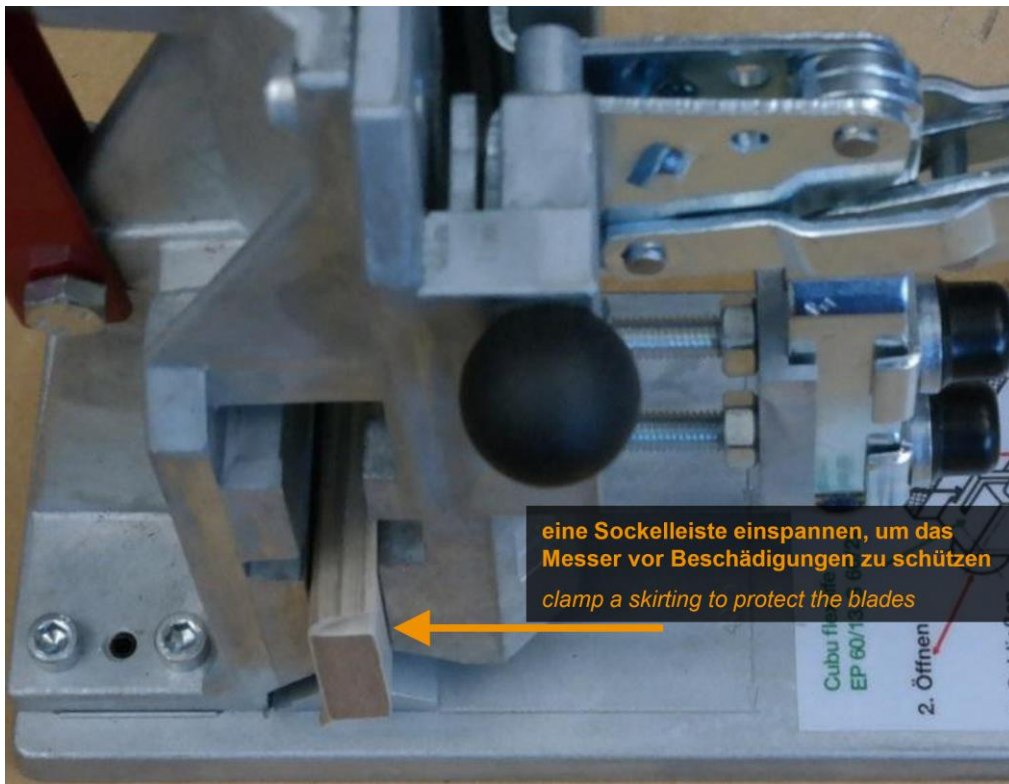
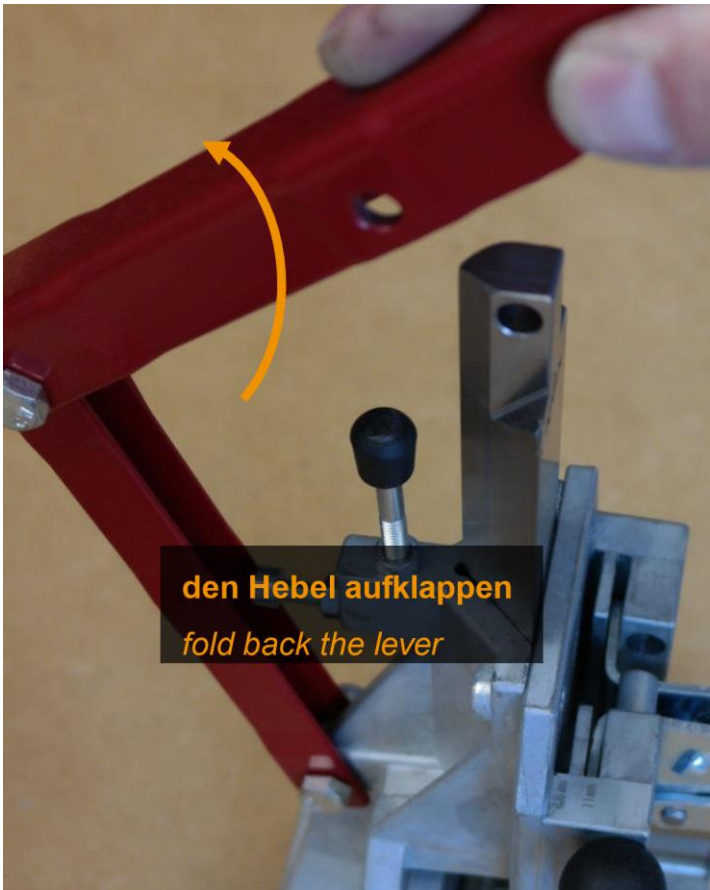


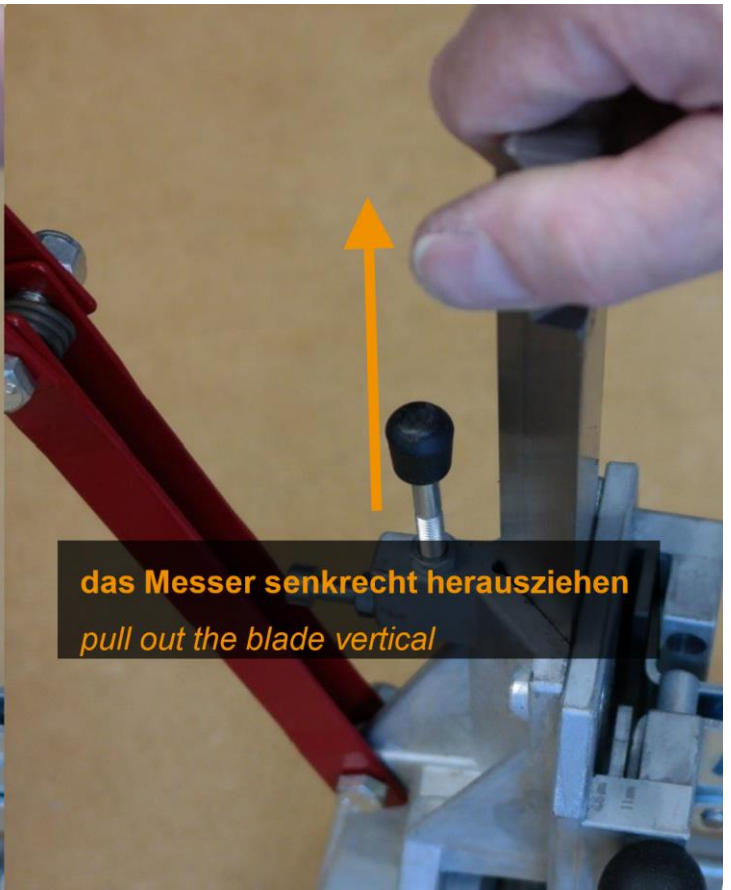
# Messer wechseln – Kerbstanze

How to change the punching blade – mitre tool

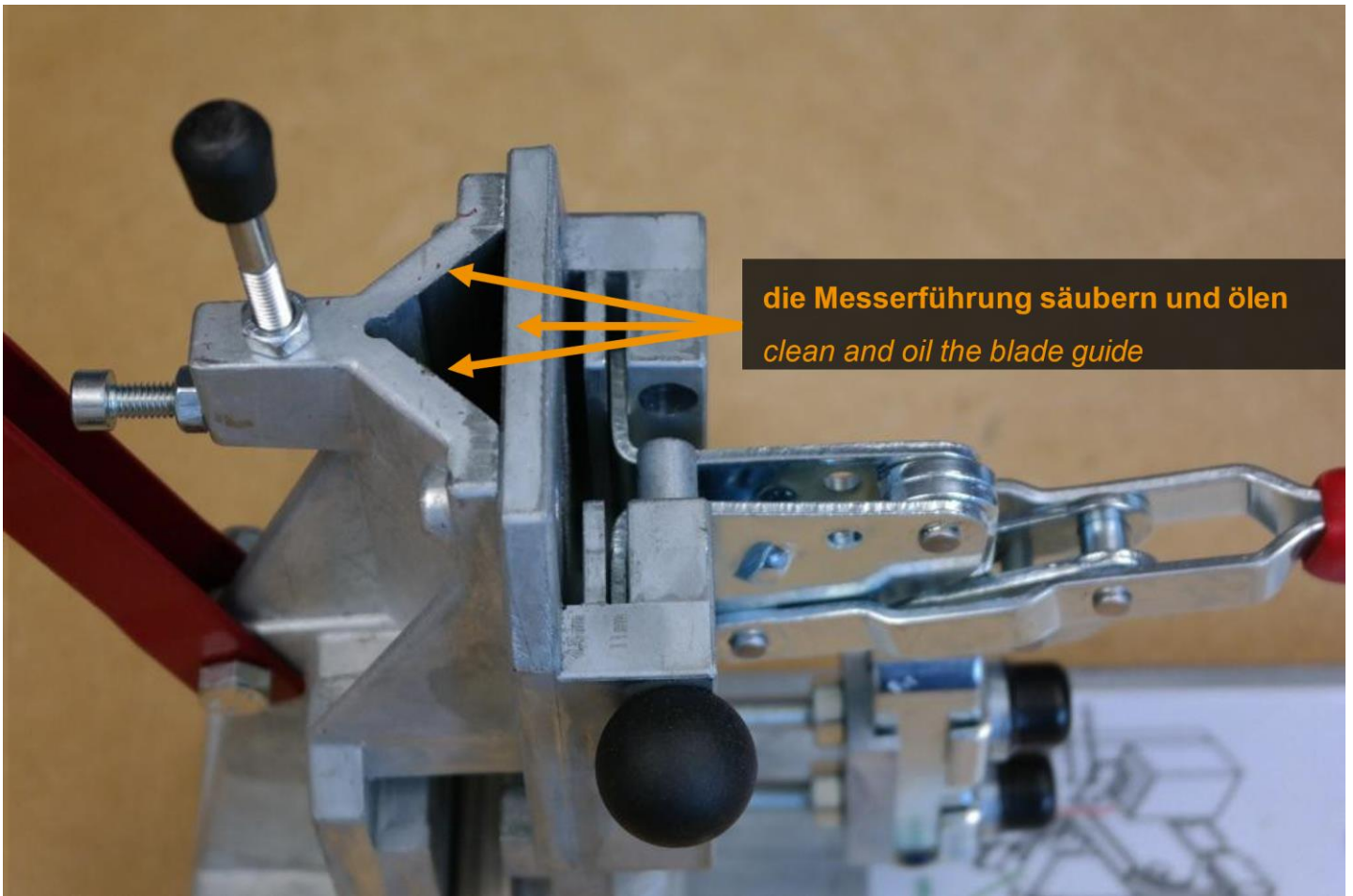




**den Hebel aufklappen**  
*fold back the lever*



**das Messer senkrecht herausziehen**  
*pull out the blade vertical*



**die Messerführung säubern und ölen**  
*clean and oil the blade guide*

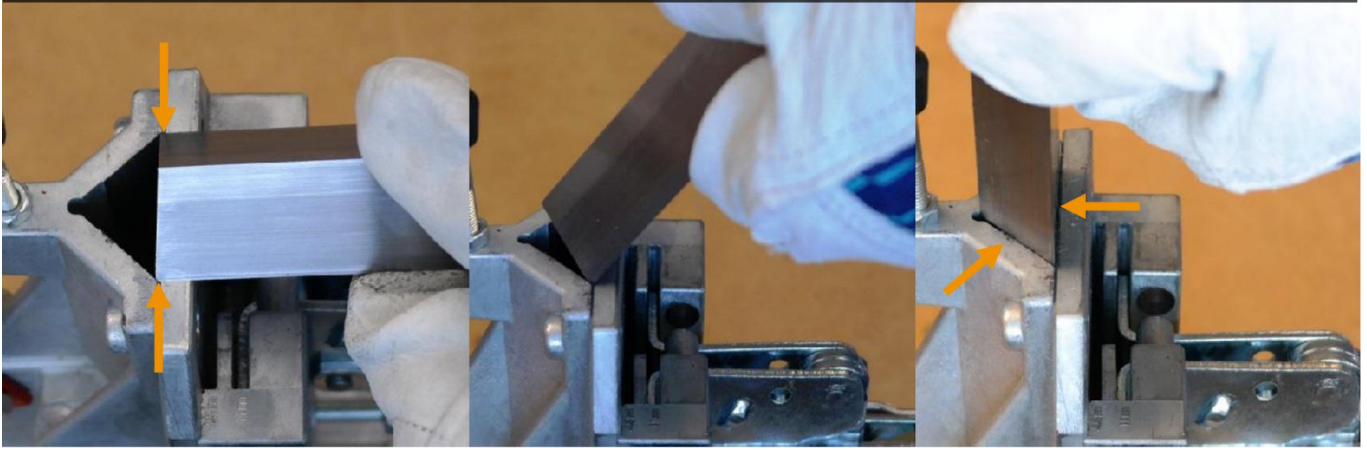


**Vorsicht: scharfe Schneiden – Verletzungsgefahr!**  
**Be careful: sharp Blades - risk of injury!**

**das neue Messer ausrichten**  
*align the new blade*

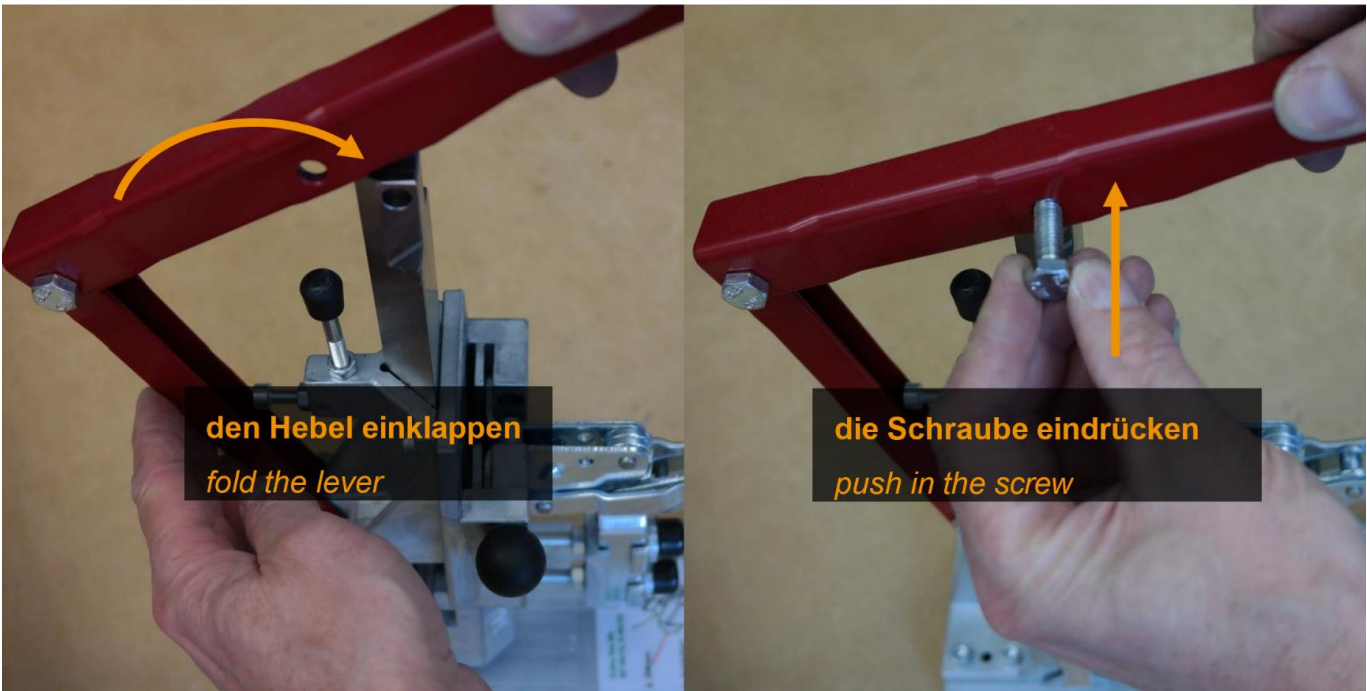
**vorsichtig einführen**  
*insert carefully*

**senkrecht absenken**  
*lower the blade vertical*

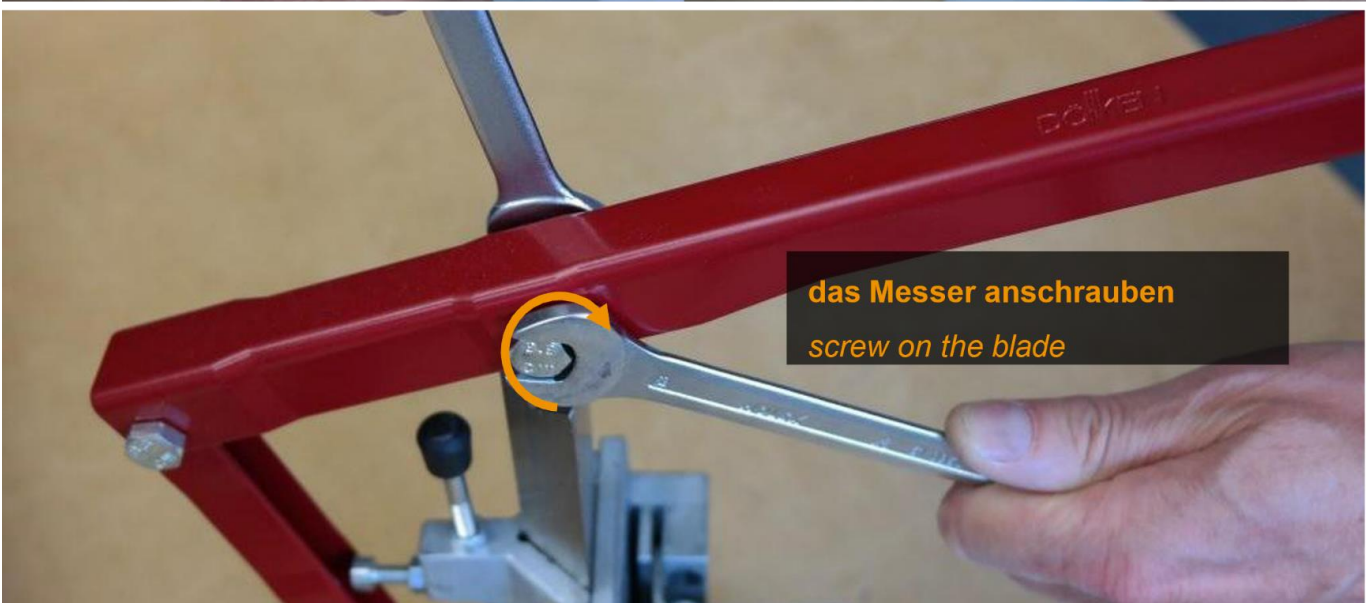


**den Hebel einklappen**  
*fold the lever*

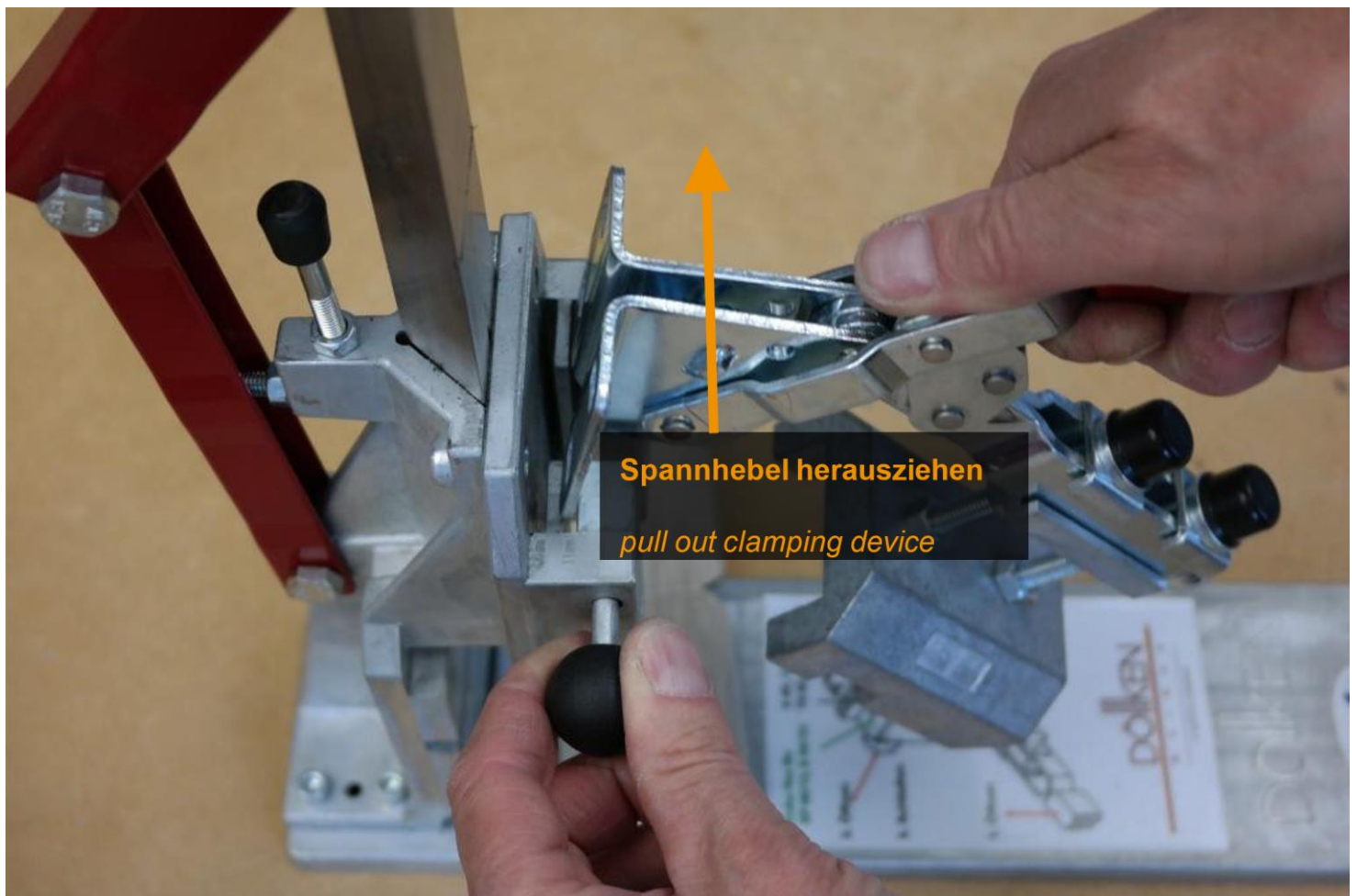
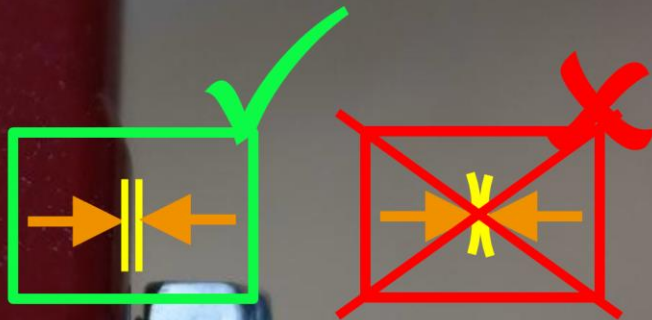
**die Schraube eindrücken**  
*push in the screw*



**das Messer anschrauben**  
*screw on the blade*



**Vorsicht / Attention**  
**nicht festziehen, bewegliches Teil**  
*do not tighten, movable part*



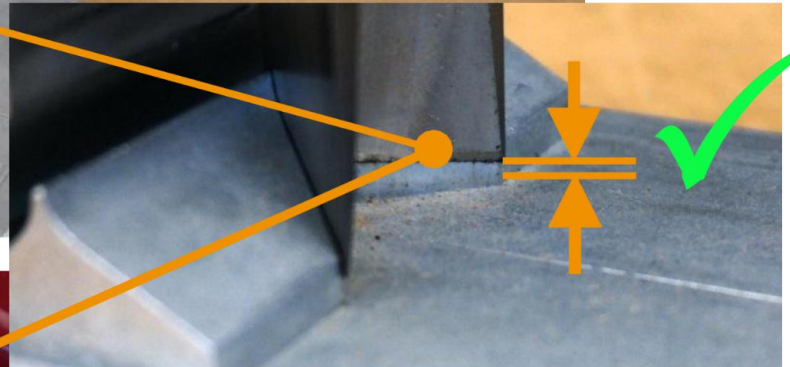
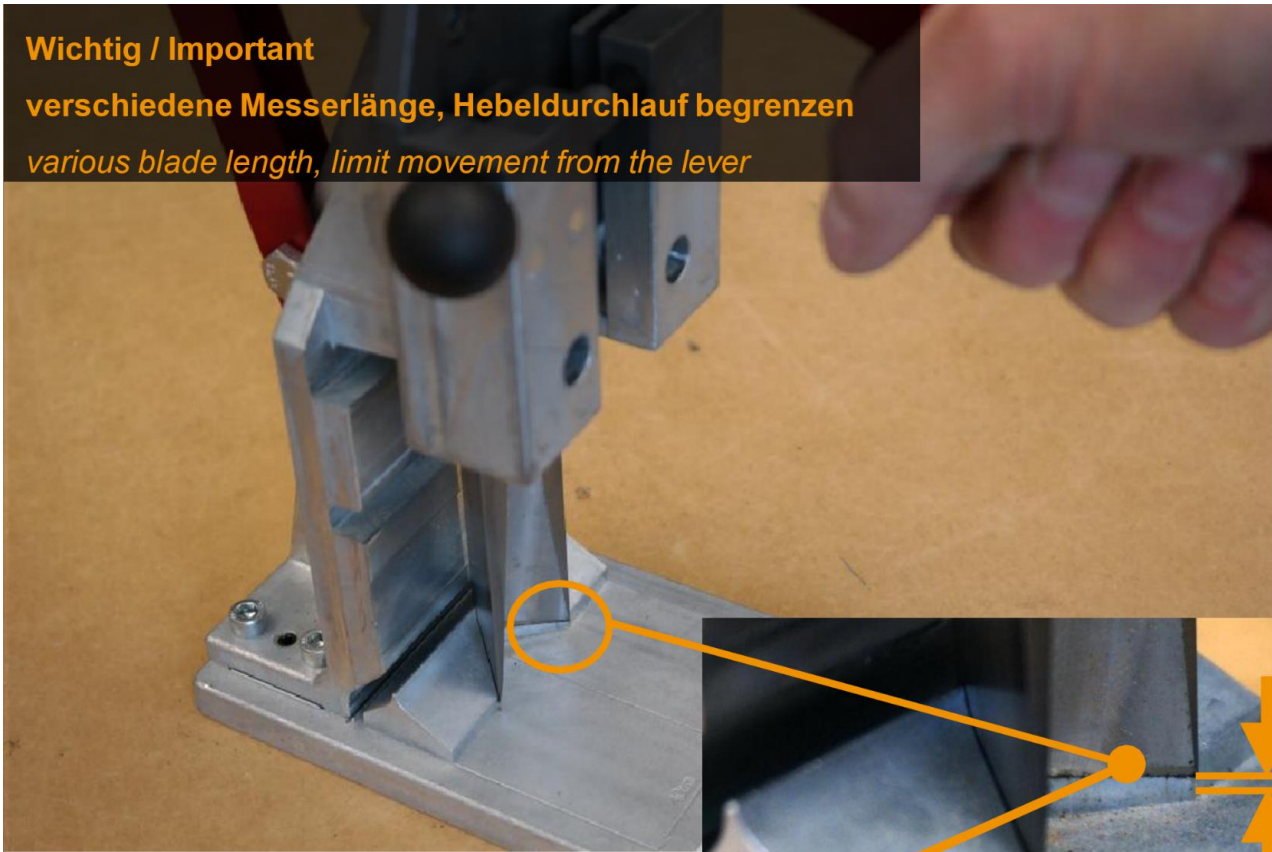
**Spannhebel herausziehen**  
*pull out clamping device*



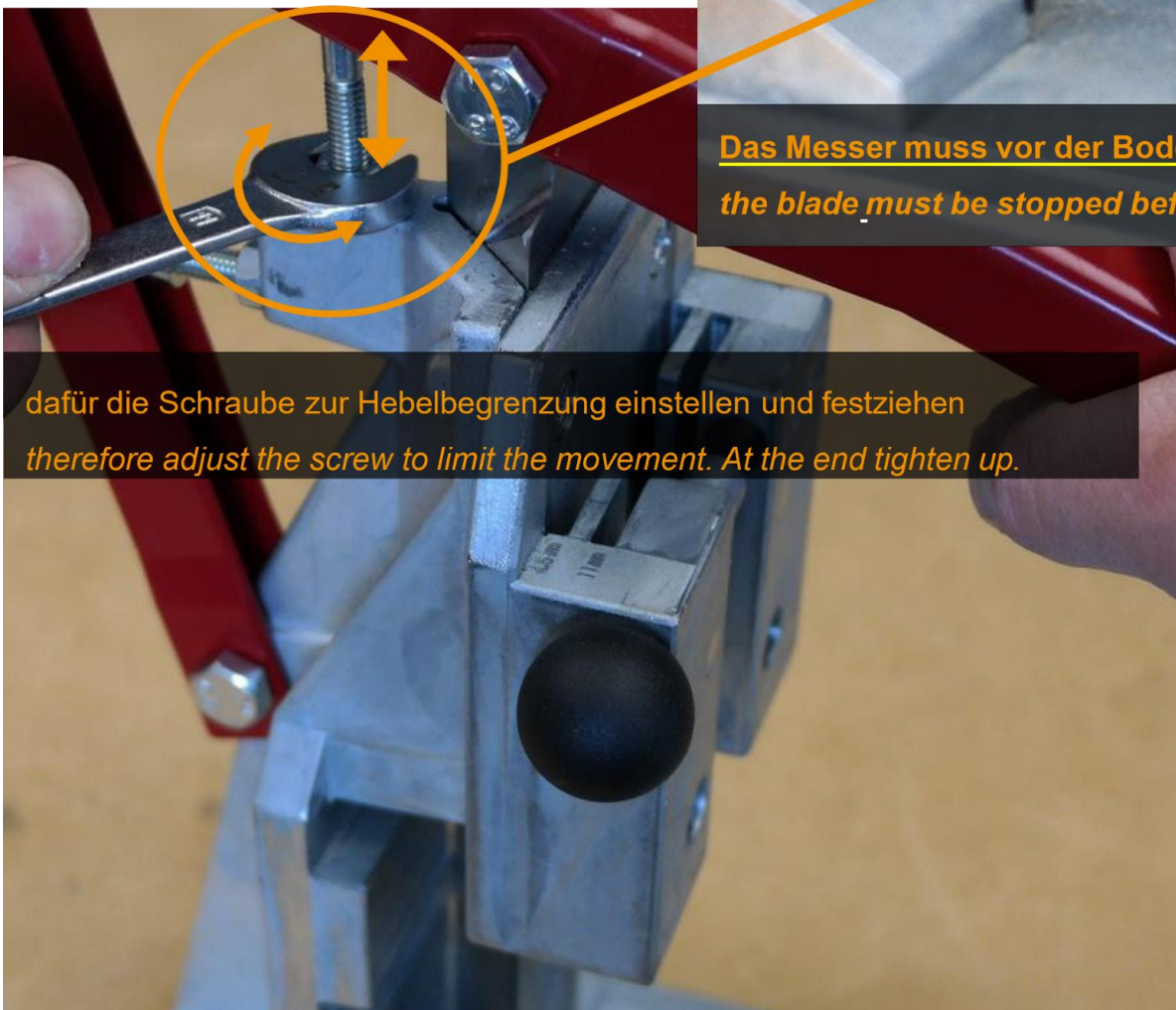
**Wichtig / Important**

**verschiedene Messerlänge, Hebeldurchlauf begrenzen**

*various blade length, limit movement from the lever*



**Das Messer muss vor der Bodenplatte stoppen**  
*the blade must be stopped before pedestal*



dafür die Schraube zur Hebelbegrenzung einstellen und festziehen  
*therefore adjust the screw to limit the movement. At the end tighten up.*